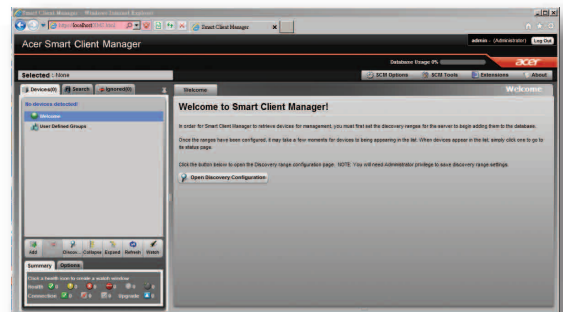




acer

Acer Smart Client Manager In-band Management Support (For all PCs)

Acer Smart Client Manager complies with WMI, SSH and SNMP standards.



Features

- In-band Access
- Overall Health Status
- Inventory Data on Demand
- Live Statistics on Hardware Assets
- Event Logs

Executive Summary

Acer Smart Client Manager is an extensible solution for centralized management of devices deployed within a network. Organized as a plug-in framework, it provides device-specific management features for each individual plug-in. Acer Smart Client Manager software can be installed on Windows® operating systems.

Acer Smart Client Manager is a management solution for monitoring and remotely managing devices through operating systems as a pluggable component.

Host Discovery

The Host Discovery feature searches the network for manageable host devices and presents them in an intuitive web interface where they are grouped under In-band Management Devices. Device statuses are also monitored and presented to the user.

Hardware Inventory

The Hardware Inventory feature collects, stores and analyzes information about a computer's hardware assets. Hardware assets include motherboards, media devices, memory, PCs and processors.

Software Inventory

The Software Inventory feature collects information about a computer's software assets. Software assets include installed software and service packs, a list of processes currently running, a list of services available, and current status for selected host devices.

Power Control Management

The Power Control Management feature allows the user to control the power of a managed device using the web interface from anywhere within the network. This module allows the user to perform various actions such as reboot, shutdown and Wake-on-LAN (WOL).

BIOS Update Management

The BIOS Update management module remotely updates BIOS firmware images for manageable devices. This module has features such as BIOS Image Repository, Scheduled BIOS Update and Update History. Also provided is an option to perform automatic remote BIOS updates for multiple host devices.

User and Group Management

Acer Smart Client Manager allows the user to view the list of existing users and groups for selected host devices. The user can edit or delete required user accounts and user groups, as well as add new credentials.

SNMP Trap Log Monitoring

Host devices generate SNMP-based events when important activities are performed. Acer Smart Client Manager is registered to log certain types of SNMP traps. Acer Smart Client Manager receives events and sends SNMP traps to the registered plug-ins. The module then logs the SNMP traps and alerts the administrator.

Health Monitoring and Alerts

Acer Smart Client Manager allows health monitoring of managed devices. The module's health monitoring feature is based on the device's hardware and software assets health status. The health status of an individual asset can be determined by configurable health parameters called health thresholds. These threshold values can be configured for services such as overall CPU loading, disk partition size, overall memory usage, network traffic, and CPU and memory loading for monitored processes.

The module sends alert emails whenever a device's health status crosses its threshold level. Aside from health threshold alerts, users can also configure alerts based on the status of the monitored process and specific SNMP traps.



Acer Incorporated
8F, 88, Sec.1, Xintai 5th Rd., Xizhi New Taipei City 221, Taiwan, R.O.C.
www.acer.com



American Megatrends Incorporated
5555 Oakbrook Parkway Building# 200 Norcross, GA30093
www.ami.com/megarac