

## Acer Smart Cloud Builder Solution Brief

Acer launches the Acer Smart Cloud Builder (ASCB) solution by capitalizing on its high-performance server technology and expertise in data center deployment for industries which require mission critical computing capability. ASCB uses high availability software in compute and storage nodes to provide all the elements of cloud computing, including on-demand self-service, broad network access, resource pooling, rapid elasticity, and measured service. Acer's Cloud Smart Portal (CSP) supports multiple hypervisors for resource allocation and service management in a virtualized IT environment. CSP effectively reduces the total cost of private cloud ownership and provides the flexibility and convenience a business needs to realize the benefits of cloud computing.

### Features and Benefits

**High Availability** – ASCB solution incorporates high availability capability in compute and storage nodes, providing continuous service and minimum downtime for mission critical applications.

**Rapid Setup** – After installing hardware, the ASCB solution can be set up in half a day. Users can quickly deploy and enjoy a user-friendly, scalable private cloud solution.

#### Easy-to-Use Portal

– Acer's CSP is an easy-to-use portal, allowing IT users to

quickly and easily create virtual machines (VMs) from a template and deploy within minutes.

**Validated Architecture** – Acer solutions are tested and proven to work in real businesses. By providing a complete software and hardware solution, Acer's validated architecture can be easily scaled to support business expansion.



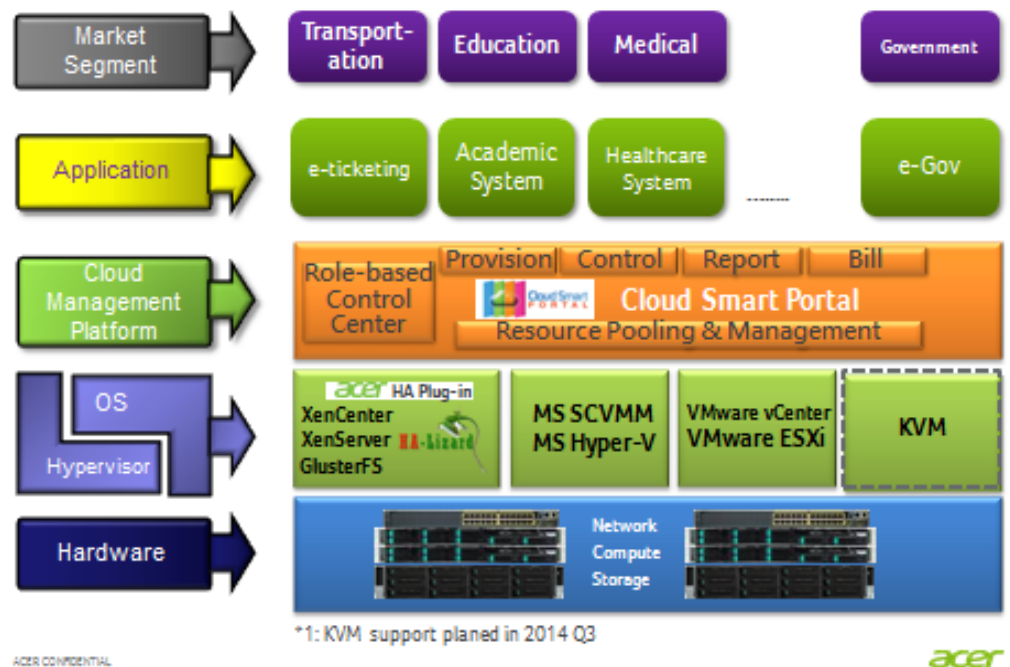
## Success Reference

Acer Smart Cloud Builder (ASCB) has built many reference sites across APAC like Taiwan, Thailand, and China, in both education and government sectors. In these success cases, ASCB helps users optimize resources in order to cope with application workload.

## Solution Stack

ASCB solution includes compute servers, storage servers, and network equipment, plus a management platform – CSP. The solution is designed for mission critical applications by providing on-premises or remote site implementation of high availability compute and storage nodes.

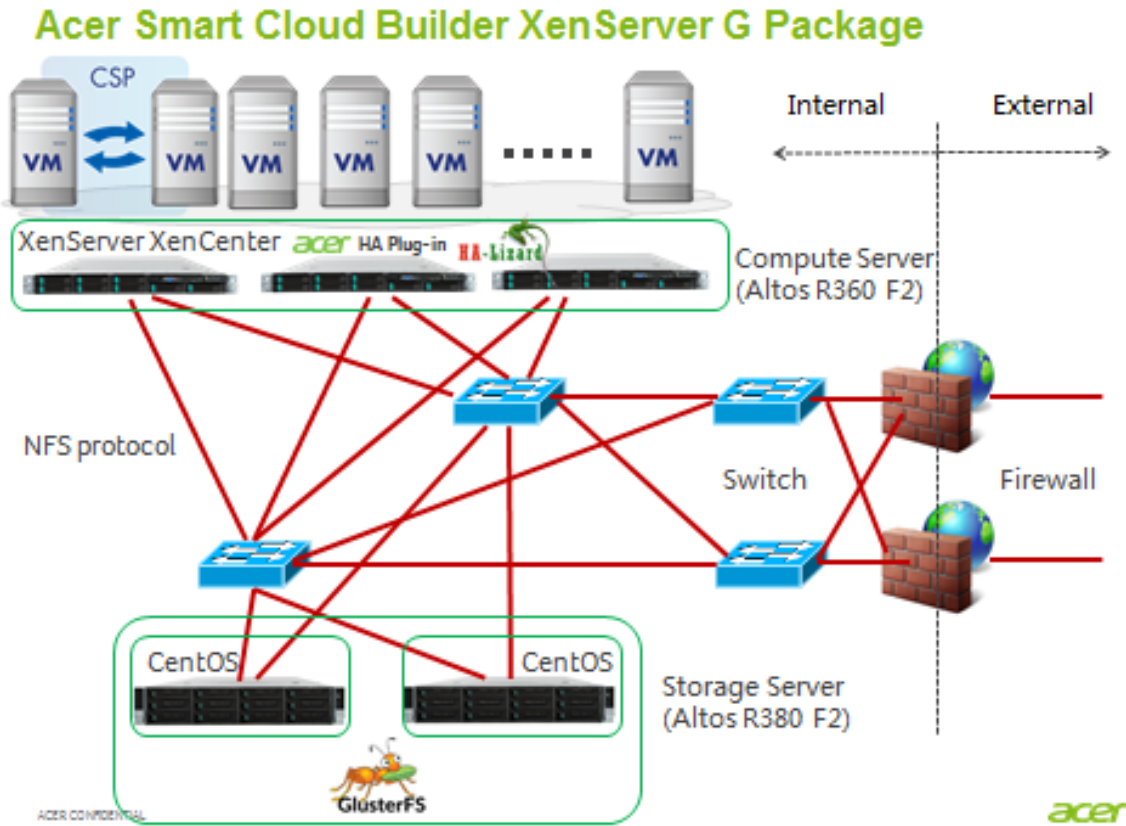
### Acer Smart Cloud Builder Solution Stack



## Solution Packages

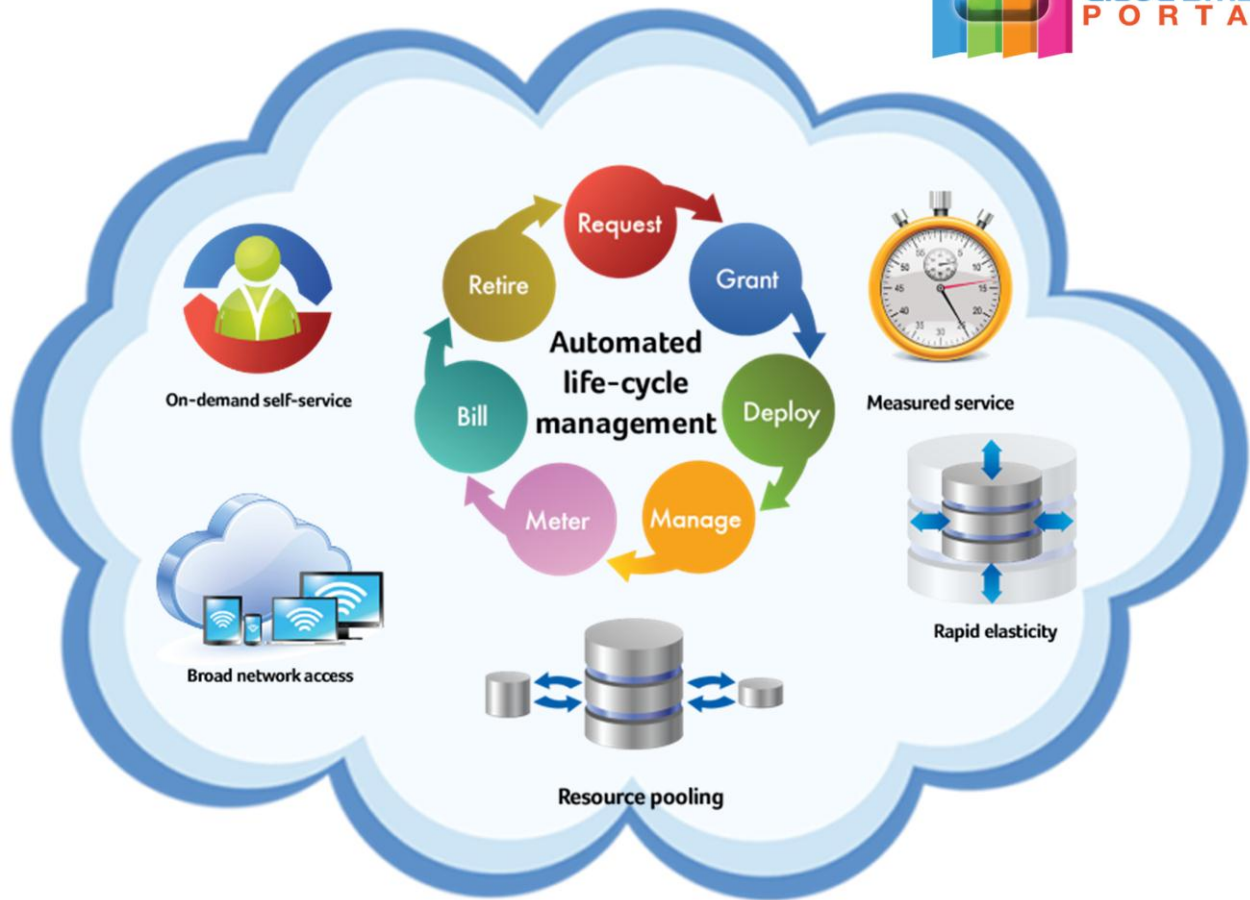
ASCB deploys rapidly and is easy to use. Users will enjoy Cloud Smart Portal (CSP) features like on-demand self-service, broad network access, resource pooling, rapid elasticity, measured service, and support for popular hypervisors. In addition, IT managers can deploy Acer compute servers and relevant storage servers to host the cloud environment for fast implementation of the cloud platform according to system and business needs. For example, here is a scenario with ASCB G package of XenServer

system architecture based on Acer compute server Altos R360 F2 (XenServer as hypervisor system) and Acer storage server Altos R380 F2 (CentOS and GlusterFS):



## Cloud Smart Portal

Cloud Smart Portal (CSP) supports a choice of major hypervisors, e.g. VMware® ESXi, Hyper-V™, and XenServer®. Virtualization is only the first step in realizing the benefits of private cloud computing; CSP enables many other key features, including on-demand self-service, broad network access, resource pooling, rapid elasticity, and measured service. CSP provides a user-friendly single-entry portal, with automated process management and resource monitoring capacity for the different needs of each defined role. This allows users to easily manage their private cloud and enjoy the benefits of cloud computing. The functions and features of CSP are as follows:



Module	Function	Module	Function
<b>On-Demand Self-Service</b>	Service Portal	<b>Resource Pooling</b>	VMware hypervisor
	Role-based access control		Hyper-V hypervisor
	Project control		XenServer hypervisor
	Service catalogue		Host HA
	VM subscription		VM fault-tolerant
	Approval process	<b>Rapid Elasticity</b>	Scale up/down
	Automated provisioning		Scale in/out
	VM operations		Guest OS install from ISO file
	VM motion		Project across multiple VLAN
	Autoscan discovery	<b>Measured Service</b>	Performance monitoring
	Account sync with AD		Utilization monitoring
	Event logs		Event alerting
	CSP heartbeat		Dashboard (4-tier)
	Company logo placement		System topology maintenance
<b>Broad Network Access</b>	VM IP by DHCP		Monitoring threshold toggle
	VM IP by fixed IP		Billing/chargeback
	Microsoft load balancing	Service report subscription	
	F5 load balancing	Configuration table	